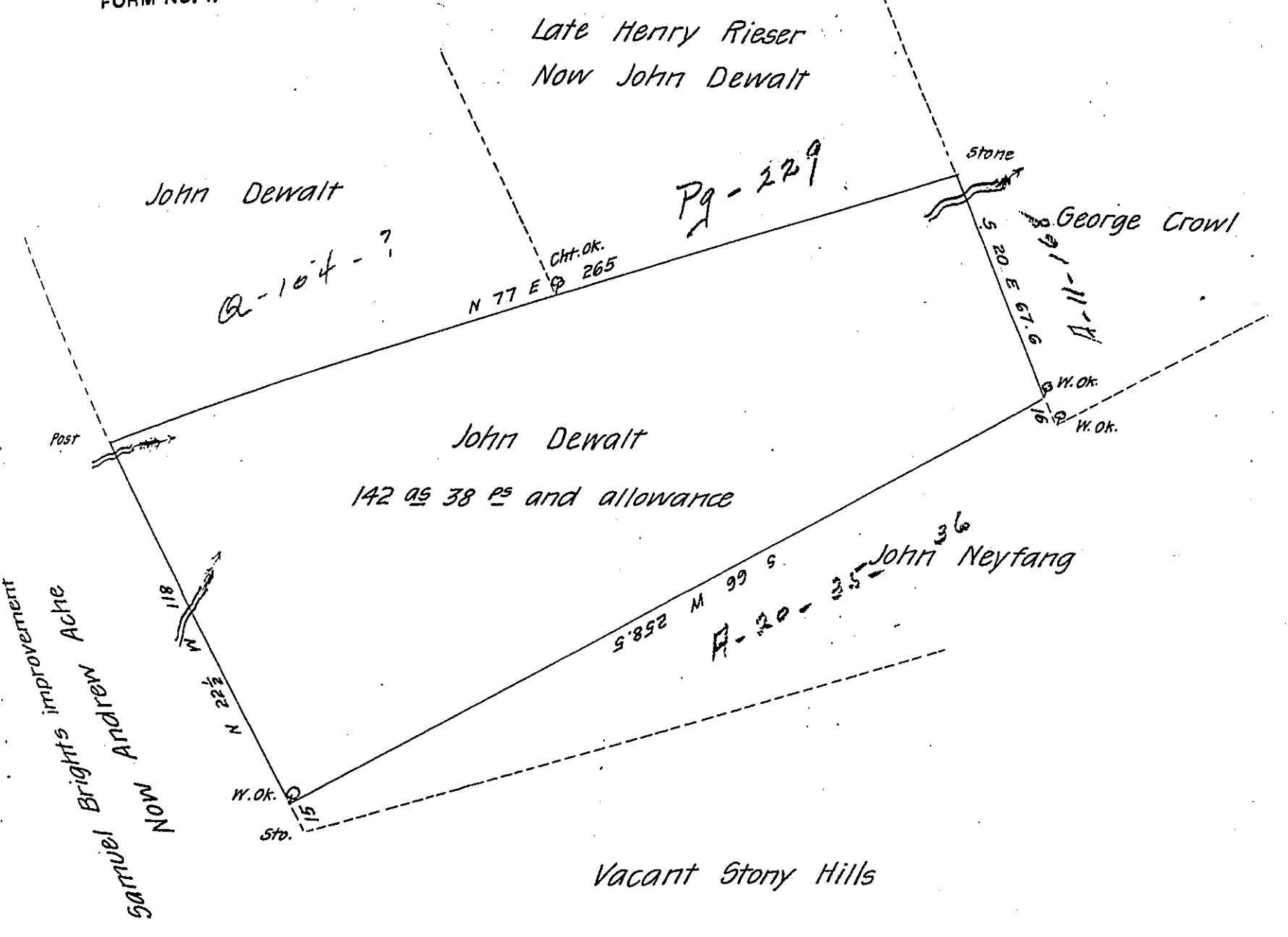


FORM No. 1.



Situate in Manheim Township Schuylkill County and surveyed  
 the twenty seventh day of February 1816 in pursuance of a warrant granted  
 to Valentine Rasht dated October 24-1753

James McFarland D.S.

Ricd T. Leech Esq

Survey Gen

N.B. It appears that there has been a survey made upon the above fifty or  
 sixty years ago and that it is one of the first settlements in that neighbour-  
 hood. — A. Egidius Meyer one of the adjoiners called for in the warrant  
 is about three miles further to the West

James McFarland D.S.

IN TESTIMONY that the above is a copy of the original remaining on file in  
 the Department of Internal Affairs of Pennsylvania, made  
 conformably to an Act of Assembly approved the 16th day of  
 February, 1833, I have hereunto set my Hand and caused  
 the Seal of said Department to be affixed at Harrisburg,  
 this twenty third day of October 1906

*Geac D. Brown*  
 Secretary of Internal Affairs